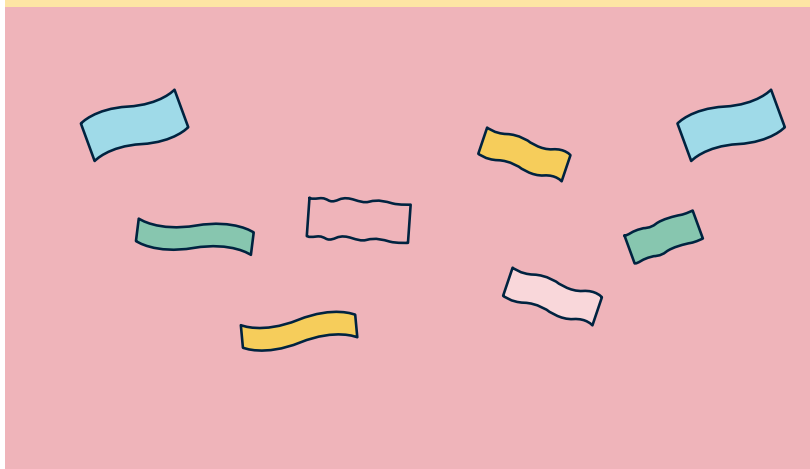




DRINKS





FORTNUM'S SPARKLING & WINE



SPARKLING

125ml

Bottle

Blanc de Blancs Champagne

£16.25

£80.00

Hostomme, NV

Prosecco

£9.50

£50.00

Valdobbiadene, Zucchetto, NV

Rosé Champagne

£16.75

£82.00

Billecart - Salmon, NV

Rosé Sparkling Tea 15 kcal

£7.25

£38.00

0% ABV Certified Organic blend of eight
of our Famous and Rare Blend Teas

WINE

175ml

Bottle

Vinho Verde

£8.00

£30.00

Adega de Moncao, Portugal 2020

Côtes du Rhône

£8.00

£30.00

Andre Brunel, France 2020

Bardolino Chiaretto Rosé

£8.50

£32.00

Tantini, Italy 2016



FORTNUM'S BEER & CIDER



English Pilsner, Westerham Brewery

£4.75

4.9% ABV 330ml

Devon Vintage Cider

£5.75

6.5% ABV 500ml



SOFT DRINKS



Freshly Squeezed Orange Juice 162 kcal

£4.50

Apple Juice 93 kcal

£4.00

Fresh Lemonade 136 kcal

£4.95

Mineral Water Still / Sparkling

£2.95 / £4.75

330ml / 750ml

All wines sold by the glass are also available in measures of 125ml.
Adults need around 2000 kcal per day.

ICED DRINKS

Fortnum's Jasmine Pearls and Moroccan Mint Iced Tea 8 kcal £4.95

Fortnum's Peach Black Iced Tea 8 kcal £4.95

Served with Honey Syrup 29 kcal

Iced Latte 173 kcal £4.25

Iced Americano 14 kcal £4.25

FORTNUM'S TEAS



Platinum Jubilee Blend Tea 0.5 kcal £5.95

A subtle, slightly smoky blend, it is delicious paired with a classic cucumber sandwich.

Black 0.5 kcal £5.95

Breakfast Blend, Afternoon Blend, Earl Grey, Royal Blend, Countess Grey, Queen Anne, Victoria Grey, Smokey Earl Grey

Green 0.5 kcal £5.95

Sencha, Jasmine Pearls, Genmaicha, Moroccan Mint, Gunpowder

Infusions 0.5 kcal £5.95

Rooibos, English Mint, Apricot with Honey and Lavender, Elderflower with Strawberry and Rose, Camomile

Milks — Full / Semi Skimmed / Skimmed / Oat 13 / 9 / 8 / 20 kcal

COFFEES

Single / Double Espresso 12 / 12 kcal £3.50 / £3.95

Macchiato 44 kcal £3.75

Americano 14 kcal £4.25

Cappuccino / Latte / Flat White 173 / 173 / 136 kcal £4.25

Milks — Full / Semi Skimmed / Skimmed / Oat 13 / 9 / 8 / 20 kcal

HOT CHOCOLATE

Fortnum's Milk or Dark Hot Chocolate 678 kcal / 415 kcal £5.95

Served with Whipped Cream and Chocolate Shavings 73 / 22 kcal

Single Estate 45% Milk Hot Chocolate 315 kcal £8.95

Nicaraguan. Served with Whipped Cream and Chocolate Shavings 73 / 22 kcal